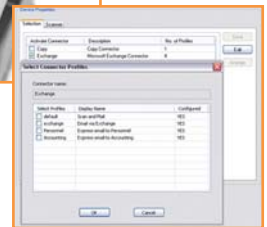


Transform paper documents into digital files that seamlessly integrate into your existing workflow applications.

Coupled with Sharp Multi Function Peripherals (MFPs), eCopy ShareScan OP transforms paper documents into information that easily integrates with your business applications. Complementing Sharp's award winning ImageSEND technology, eCopy ShareScan OP offers a dynamic touch screen user interface with document preview, address integration, and other workflow enhancing features including Scan and Mail, Scan and Fax and Scan to Desktop. eCopy Desktop™ software is user-friendly and enables you to create PDF's by combining documents from different sources. You can also perform markups or annotations, sign documents electronically then integrate them with your network fax, and document management systems.

With eCopy's Quick Connect feature you can create custom "scan to" buttons, automating the workflow process for scanned documents. In addition, eCopy's add-on Connectors offer native integration with a wide variety of enterprise software applications to help you maximize the return on your IT investment.

An eCopy-enabled Sharp MFP can increase the efficiency of enterprise workflows while decreasing operating costs.



configure and display multiple connector profiles

KEY FEATURES

Scanning

- **Document Preview** screen for verification of image quality in either color or black and white.
- Routing rules can be set at the Administration Console for **one step distribution**.

Integration

- **Seamless integration** with corporate e-mail address books.
- **Session Logon retains authentication information**
- **Configure Scan and Mail Connectors** to send an e-mail to the **authenticated user** only.
- Tighter **integration with MS SQL and Access databases** improving the integrity of meta data.
- **Configure** and display **scanner settings** such as DPI, paper size and color depth by Connector.

Security

- **Document security** using password protection with 128-bit encryption.
- **eCopy Activity Tracking** increases **audit trail** capabilities.
- **PDF Security** at the MFP enables users to access standard document password settings for Adobe.



With an eCopy Enabled Sharp MFP You Can Increase Operating Efficiency and Cut Costs by Integrating Paper Documents into your Electronic Workflow!

eCopy ShareScan OP is comprised of:

eCopy ScanStation

- Integrated, free standing touch screen with easy to read icons for destination options, keyboard, and PC that connect easily to your Sharp MFP.
- Supports both color and black and white scanning.

eCopy Desktop

- Powerful set of document workflow tools enabling users to create PDFs in seconds, combine documents from different sources, perform markups or annotations, sign documents electronically and integrate scanned documents with e-mail, fax, and document management systems from their desktop.
- Compatible with most network fax, e-mail, and ODMA-compliant document management applications.
- 10 licenses ship with the standard product, additional licenses may be purchased.

Connectors

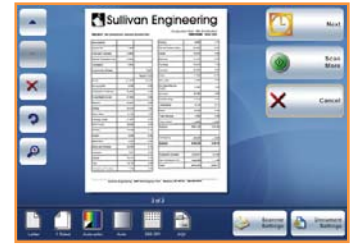
An eCopy-enabled Sharp MFP provides direct integration to a multitude of back-end applications via an eCopy Connector. A "Connector" is a link between an eCopy-enabled Sharp MFP and a networked software application or service like e-mail, document management systems, fax servers, enterprise software applications, etc. With eCopy integrating Sharp MFPs into existing enterprise workflows is simple:

Core Connectors (Bundled with the base product)

- **Microsoft SharePoint Connector*** – documents can be sent to SharePoint repositories for storage and ongoing document lifecycle management.
- **Scan to Desktop** – delivers scanned documents to the desktop.
- **Scan and Fax** – sends scanned documents using a company's existing network fax server or service.
- **Scan and Mail** – delivers scanned documents using a company's existing e-mail system.
- **Scan to Printer** – sends scanned documents to a remote printer anywhere on the network.
- **eCopy Quick Connect** – offers custom "Scan to" Buttons easily automating the workflow for scanned documents.

Add-On Connectors Available Through Sharp Authorized Dealers:

- **Services** – Bates Numbering, Cost Recovery
- **Document Management** – EMC Documentum Content Server, Filenet, Hummingbird Enterprise DM, Interwoven Worksite, Open Text's LiveLink



Preview scanned documents before sending

Add-On Connectors Available Through Third Party Vendors:

- **Fax Server** – Biscom FAXCOM, Castelle FaxPress, emFAST FACSys, Interstar XMediusFAX/LighteningFAX, TOPCALL International TOPCALL Communication Server
- **Document Management** – Ados, Columbiasoft Document Locator, DocuWare, eMason Clarity, EMC Documentum Application Xtender, Hyland Software OnBase, J&H Office Equipment StapleWare (integration with DocuWare), Laserfiche, Open Archive echive, Questys Pro/Enterprise, Thomson Elite ProLaw, Tokairo Limited TokOpen, Westbrook FileMagic & Fortis, World Corporation Worldox, ZyLAB ZylIMAGE
- **Cost Recovery** – Billback Systems iBillback, Copitrak, Equitrac, nQueue nQembedded, Print Audit 5, Sepialine Argos Platform
- **Miscellaneous** – Biscom FileMarshal, ePrint Direct RemotePrinter, Open Archive Batch REnew, Rochester Software Associates, Inc. Qdirect.EDU, ScanPoint uniConnect

To download the 45 Day Evaluation for a Connector, or for the most detailed list including the software version supported please visit www.ecopy.com/products/connectors.htm.

* The eCopy Connector for Microsoft SharePoint uses the Microsoft .NET framework to communicate with SharePoint products and technologies. Version 1.1 or later of the framework must be installed on the ScanStation PC for the Connector to work properly. The latest version of the .NET framework can be downloaded, free of charge at www.microsoft.com.

SPECIFICATIONS

System Requirements	
eCopy ScanStation ships with these Operating Systems	MS Windows XP, MS Windows 2000
Memory	512 MB
PC Processor	2.6 Ghz

1) Some functions require optional equipment.

2) Standard on AR-BC-320. AR-BC260 requires (AR-NS2) Network Scanning Expansion Kit.

3) RJ45 Network Interface included with the printer controller, certain operating systems and protocols may require (AR-NC5J) option.

4) Standard on N series. AR-M350/M450 U series requires (AR-P14) Printer Controller, AR-M355/M455 U series requires (AR-P21) Printer Controller, AR-M550/M620/M700 U series requires (AR-P19) Printer Controller.

5) Standard on N series. AR-M350/M450 U series requires (AR-NC5J) Network Interface Card (NIC), AR-M355/M455 U series and AR-M550/M620/M700 U series NIC is included with Printer Controller Option.

Compatible Sharp MFPs	MX Workgroup Color Document System			
	AR-BC260/AR-BC320 Series	MX-2300N/2700N Series	MX-3500N/3501N/4501N Series	MX-5500N/6200N/7000N Series
General Information				
Speed (PPM)	26 b/w / 17 color ppm 32 b/w / 26 color ppm	23 b/w & color/ 27 b/w & color ppm	35 b/w & 35 color/ 35 b/w & 35 color/ 45 b/w & 35 color ppm	55 b/w & 41 color/ 62 b/w & 41 color/ 70 b/w & 41 color ppm
Functions ¹	Print/Copy/Scan/Fax	Print/Copy/Scan/Fax	Print/Copy/Scan/Fax	Print/Copy/Scan/Fax
Printer Controller	Standard	Standard	Standard	Standard
Network Interface Card	Standard	Standard	Standard	Standard
Network Scanning/Printing Expansion Kits	Standard ²	Standard	Standard	Standard
Memory Expansion Required	None	None	None	None

Compatible Sharp MFPs	Digital IMAGER (Monochrome)			
	AR-M237/M277 Series	AR-M350/M450 Series	AR-M355/M455 Series	AR-M550/M620/M700 Series
General Information				
Speed (PPM)	23/27 ppm	35/45 ppm	35/45 ppm	55/62/70 ppm
Functions ¹	Print/Copy/Scan/Fax	Print/Copy/Scan/Fax	Print/Copy/Scan/Fax	Print/Copy/Scan/Fax
Printer Controller	AR-P17	Standard ⁴	Standard ⁴	Standard ⁴
Network Interface Card	AR-P17 ³ or AR-NC5J ³	Standard ⁵	Standard ⁵	Standard ⁵
Network Scanning/Printing Expansion Kits	AR-NS2	AR-NS2	AR-NS3	AR-NS3
Memory Expansion Required	128MB	None	None	None

Compatible Sharp MFPs	Digital IMAGER (Mono-Small Office)		Document Communication System	
	AR-168S/168D Series	AR-M162/M162E/M207/M207E Series	FO-DC525/DC535/DC600/DC635 Series	FO-DC550 Series
General Information				
Speed (PPM)	16 ppm	16/20 ppm	16 ppm	16 ppm
Functions ¹	Print/Copy/Scan/Fax	Print/Copy/Scan/Fax	Print/Copy/Scan/Fax	Print/Copy/Scan/Fax
Printer Controller	AR-NB2N	AR-NB3	FO-NP1	AR-NB2N
Network Interface Card	AR-NB2N	AR-NB3	FO-LN1	AR-NB2N
Network Scanning/Printing Expansion Kits	AR-NB2N	AR-NB3	FO-NS2	AR-NB2N
Memory Expansion Required	None	None	None	None



SHARP ELECTRONICS CORPORATION
Sharp Plaza, Mahwah, NJ 07430-1163
1-800-BE-SHARP
www.sharppusa.com

Design and specifications subject to change without notice.
Sharp is a registered trademark of Sharp Corporation.
All other trademarks are property of their respective holders.
©2006 Sharp Electronics Corporation